



319-723-4221



563-263-2373



319-726-3891

### Summer/Fall Newsletter 2016

#### CONTACT YOUR LOCAL OFFICE TO SIGN UP FOR THE 2016 YIELD COMPETITION!!!

Don't miss your opportunity to be our next **\$1,000 winner!**



#### Weed Control

We have had a lot of questions and concerns about the weeds in bean fields this season. While there aren't many perfectly clean bean fields this year we are not aware of many yield limiting problems in the fields we treat. This just reaffirms the practices that we have been discussing for some years about residual herbicides and multiple modes of action.

We have also had a lot of questions about old and new herbicide traits. While we believe that herbicide traits are a good fit in some situations, like problem fields, we don't believe in always picking traits first. Genetics should be the first choice in

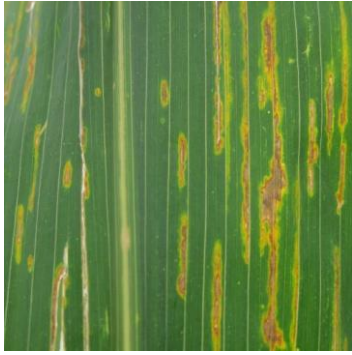
selecting a hybrid or variety. Genetic diversity should be the second selection.

For instance you might buy beans from three different companies but they could all be the same bean. No matter what you decide to do with new or old traits you can't forget residual herbicides and multiple modes of action or it won't be long and those traits won't work either.



#### PALMER AMARANTH FOUND IN CRP ACRES!

This spring there was a fair amount of new CRP acres seeded and in some of the seeding (from other suppliers) customers found Palmer Amaranth. It appears that it came from the pollinator seed. We have walked many of the newly seeded CRP fields and have identified many Palmer Amaranth plants to be cut, bagged, and removed from the field. This is a nasty weed that can be a really big problem. A few of the plants that were removed had a stem that was as big around as a pop can. If you seeded some CRP you need to be on the lookout for Palmer. If you're not sure what to look for call your local office and we will assist you in identification of the weed.



## **NEW CORN DISEASE – BACTERIAL LEAF STREAK**

So far Bacterial Leaf Streak has been identified in nine states including Iowa and Illinois. The infected leaves show narrow tan to brown streaks that range from less than an inch to several inches long. It looks very similar to gray leaf spot. The subtle difference is gray leaf spot has a very sharp, straight-edged lesions where Bacterial leaf streak has a wavy-edged lesions. Because the disease is so new there has been no research done to determine if any yield impact will occur. (You can read more about this in the Successful Farming article found at:

<http://www.agriculture.com/crops/bacterial-leaf-streak-is-a-new-corn-disease>)

### **EARLY SEED DISCOUNT DATES:**

**November 18, 2016 – 8%**

**January 20, 2017 – 5%**

**Speak to your seed salesperson for the complete details of each seed company's program.**

### **DRY FERTILIZER & NITROGEN PRICES AT LOWEST LEVEL SINCE 2008!**

Liquid and Urea prices are as close to anhydrous ammonia prices as they have ever been. P+K prices are 20% lower than last year. Now is the time to book your fall work so you take advantage of these deals!

**Mark Your Calendars for March 2, 2017 for the Annual Customer Meeting!**

## **MUSCATINE AG HAS 50# BAGS OF ICE MELT SALT FOR SALE AT THEIR LOCATION!**

### **FEED FIRE SALE**

Muscatine Ag will be going out of the feed business as soon as current inventory is gone. With the remaining odds and ends inventory we will be selling on a first come first serve basis. Please stop in and see if any of our remaining feed ingredients can be of use on your farm.



### **EAR ROT EFFECT ON GRAIN QUALITY**

Keeping in view of the weather and insurance concerns, growers should keep an eye out for corn ear rots at harvest. Corn is known to be susceptible to a number of ear and kernel rotting fungi that affect the yield, quality and feeding value of the grain. If you have any type of ear rot in your corn fields we would advise you to contact your insurance agent IMMEDIATELY to make sure the proper steps are taken. We have been told that the insurance companies want to take the samples from the combine, not a wagon, semi or bin. If you get a scale ticket that has damage from foreign material or rotten kernels you may only have 48-72 hours to get it reported to your insurer or they might reject the claim.

### **COLD WINTER PREDICTED!**

Forecasters are predicting a cold winter and the coldest December in 18 years so it is important to book your lime, strip till and propane needs as soon as you can!